



# SlashDB

# Getting Started

Launching and Configuration on  **vmware**

# How Do I Register For a Free Trial of SlashDB?

## Prerequisites

In order to activate your copy of SlashDB on VMWare, you are required to have the following:

- VMWare Player  
If you don't have one, get one for free at  
<http://www.vmware.com/go/downloadplayer>
- SlashDB License Key  
If you don't have one, get one for free at  
<http://www.slashdb.com/get-slashdb/>
- SlashDB virtual machine image (VMI)  
See slide 3 for details  
<http://demo.slashdb.com/SlashDB-mini-vmware.zip>

## SlashDB on VMWare: A tour for our users

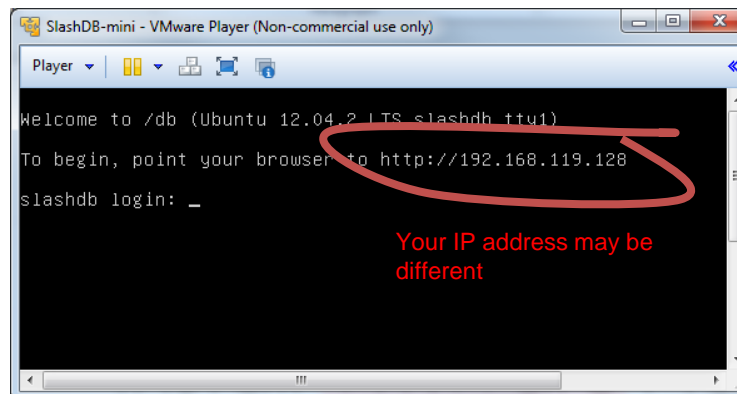
SlashDB automatically creates web APIs out of your databases.

- Easily deliver data to HTML 5 and mobile applications
- Integrate with 3<sup>rd</sup> party websites and applications
- Empower data scientists to work with unobstructed data

# 1. SlashDB VMI

If you have already installed the SlashDB VMI or do not need help with this step, proceed to the next slide.

- 1.1 Before beginning, register on our website to receive a license key and a password for virtual machine (see previous slide).
- 1.2 To download the SlashDB VMI, click the link below. It should start downloading automatically.  
<http://demo.slashdb.com/SlashDB-mini-vmware.zip>
- 1.3 Once downloaded, extract the archive and open the file **SlashDB-mini.vmx**
- 1.4 A window will pop up prompting you for a password. Enter the password sent to you in step 1.1.
- 1.5 After entering the password, the virtual machine will boot up and the Linux Console will show (screenshot below).
- 1.6 Copy the HTTP address in the Linux Console in your browser. It will redirect you to the SlashDB GUI.  
If the browser does not connect, you might be required to change the virtual machine's network settings. Follow the directions on Step 1A on the next slide.

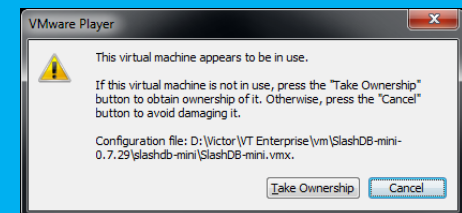


## 1.1 Installation tip

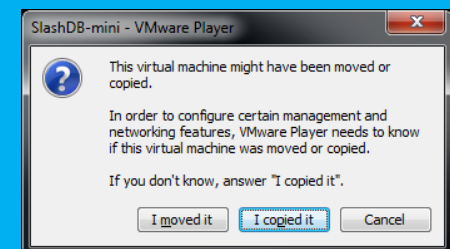
- Avoid saving to compressed file systems/folders
- Avoid folders included in backup
- Uncompressed, SlashDB will occupy about 2.1 GB of disk space

## 1.5 Installation tip

- Sometimes, you may see the following dialog. If so, **Click Take Ownership**.



- After that, another window will pop up, click **I copied that** to proceed.



# 1A. VM Network Settings

If you were able to access the SlashDB GUI or do not need help with this step, proceed to the next slide.

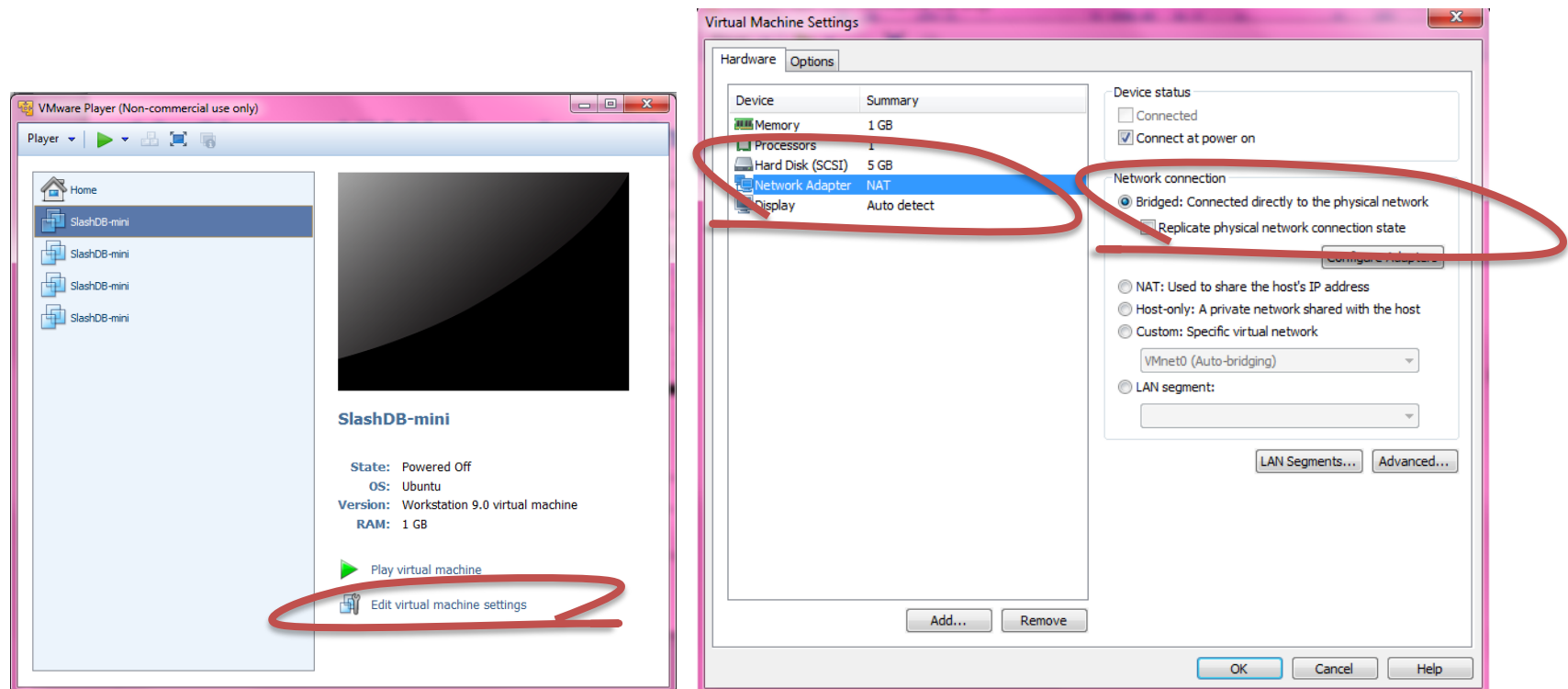
1A.1 To begin, power off the virtual machine.

1A.2 Open **VMWare Player**. Select **SlashDB-mini** and click on **Edit virtual machine settings**

1A.3 To change the settings, select **Network Adapter** and switch **Network connection** to **Bridged**. Click **OK** to save your settings. You will be redirected to the VM Library.

1A.4 Play the **SlashDB-mini** virtual machine by clicking on **SlashDB-mini**.

1A.5 Copy the HTTP address in the Linux Console in your browser again. It will redirect you to the SlashDB GUI.

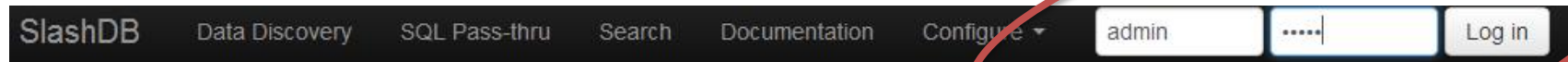


## 2. Log into SlashDB GUI

2.1 Log into the GUI on the top right of the screen with the following:

User: **admin**

Password: **admin**

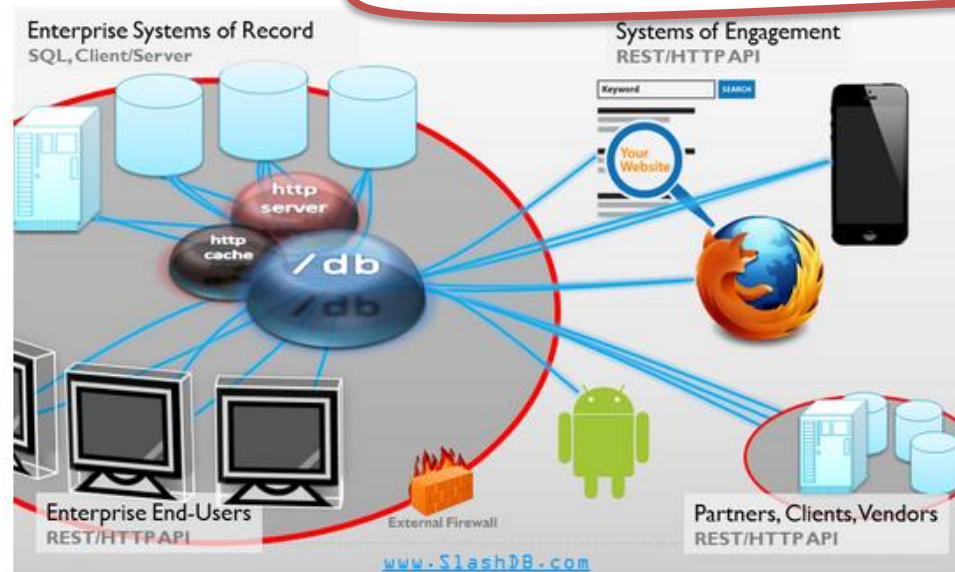


### Thank you for choosing /db!

*/db* (SlashDB) uniformly connects databases to authorized web, mobile and enterprise applications using automatically generated REST/HTTP API. Database content becomes accessible for reading and writing under variety of standard data formats such as HTML, XML, JSON and comma-separated values for maximum interoperability.

*/db* has found applications in master data management, data virtualization, data publishing APIs, e-commerce and mobile enterprise apps. Business analysts, data scientists, marketers, application developers, database administrators, web developers and other user groups all derive unique benefits from this technology

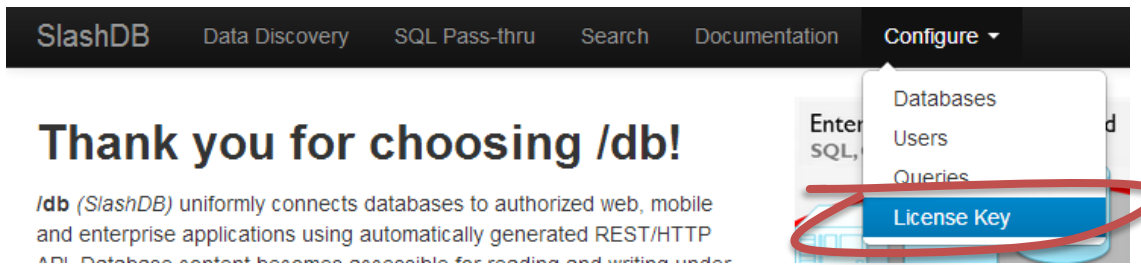
How will you encounter your data?



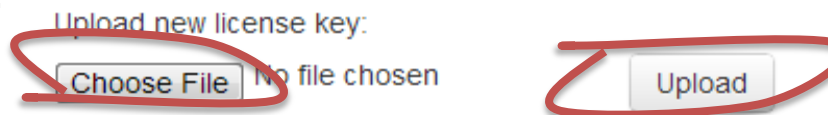
# 3. Install License Key

- 3.1 You will need a valid license key to run SlashDB. In the settings, select **License Key** from the drop-down menu under **Configure** to register your SlashDB License Key.

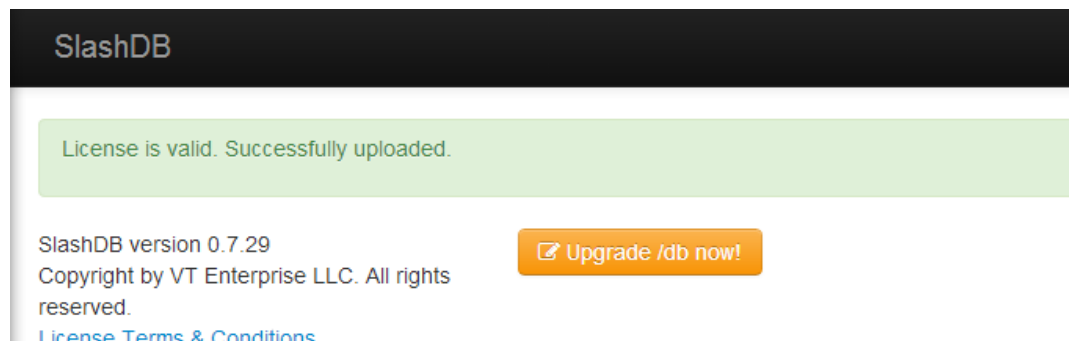
If you do not have a License Key – Follow the directions in the Blue Tip Bar on the right of the Guide



- 3.2 To upload your license key, click on **Choose File**. Select the key from your files and click **Save**.



- 3.3 Click the button **Upload** to upload the key and continue. When the key is validated, the webpage will return with a confirmation on a green bar.



## How to Get A License Key

A key will automatically be sent to your email after you fill out a short registration form on our website here:

<http://slashdb.com/get-slashdb/>

## Get License for a Year

Click the yellow button **Upgrade /db now!** to request any upgrade.

Request longer subscription periods such as 1 year to avoid having to install new keys frequently and to qualify for discounted rates.

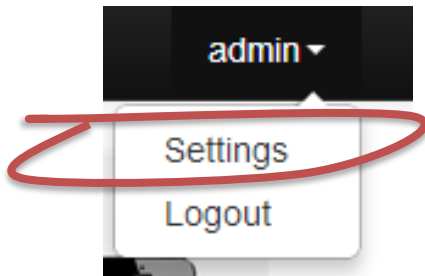
## Pricing

Try it free for 30 days, no credit card required.

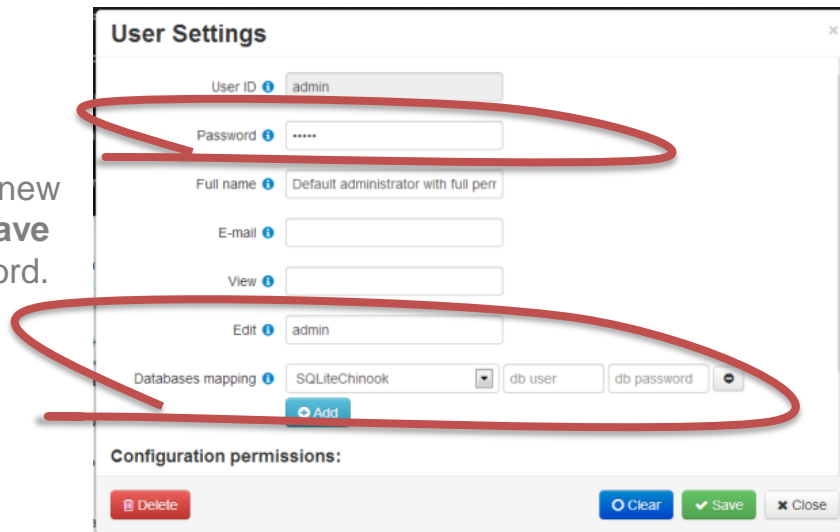
SlashDB is individually priced to fit your business or project. The total investment is generally a function of the number of web service accounts (users or client apps) and the number of databases to be served.

# 4. Admin Password & Permissions

- 4.1 To change the admin password, select **Settings** from the drop-down menu under **admin**. A window called **User Settings** will pop up into the screen.



- 4.2 In the popup, enter a new password and click **Save** to set the new password.

A screenshot of the 'User Settings' window. The window contains several input fields: 'User ID' (set to 'admin'), 'Password' (masked with dots), 'Full name' (set to 'Default administrator with full perr'), 'E-mail', 'View', 'Edit' (set to 'admin'), and 'Databases mapping' (set to 'SQLiteChinook'). There are also input fields for 'db user' and 'db password'. A blue 'Add' button is located below the 'Databases mapping' section. At the bottom, there are buttons for 'Delete', 'Clear', 'Save', and 'Close'. Red circles are drawn around the 'Password' field, the 'Databases mapping' section, and the 'Save' button.

- 4.3 To change the admin's permissions, pay close attention to the field **Databases mapping** under the User Settings window. Identify all the databases admin sees by adding each database.
- The drop-down menu will identify all the databases currently connected to SlashDB. Select one, indicate the database's actual user, add the password. To add more, Click on the blue button **Add**.
- 4.4 Click **Save** to save any changes you made. And click **Close** to close out of the window.

## Password Recovery

If you are familiar with Linux, you will easily be able to reset your own password in the backend.

Refer to "User Guide" for more info:  
<http://slashdb.com/documentation>

If you are not comfortable with Linux command line, send a request to us and we will reset your password for you.



# 5. Add Your Database

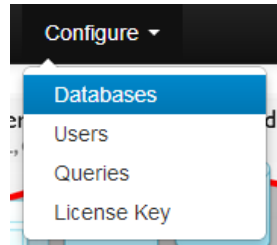
## Check the Docs, Ask for Help

If you're having trouble on this part, feel free to call or email your SlashDB representative for help or for more details.

You can also refer to the documentation online for more details.

<http://slashdb.com/documentation/>

- 6.1 To add your database, start by selecting **Database** in the drop-down menu under **Configure**.



- 6.2 Click on the blue button **New** to add your database. A window called **Database Definition** will popup. Fill out the form while following the tips on screenshot below.
- **Auto-reflect:** True
  - **Disable on start:** False
  - **Database Encoding:** Set according to your database or “utf-8” if uncertain.
  - Otherwise, keep default values.

### Database Definition

A screenshot of the 'Database Definition' form. It contains several input fields and a dropdown menu. To the right of the form, there are red text annotations providing additional information. At the bottom of the form, there are three buttons: 'Clear', 'Create', and 'Close'.

Field	Annotation
Database ID	
Description	
Type	mssql
Database Schema	
DB user	This database login will be used for automated reflection of database model
DB password	utf-8 if uncertain
Database encoding	servername:port/dbname
Database address	Select “true” for automated reflection
Auto-reflect DB	true

- 6.2 Click **Create** then **Close** to save your changes.

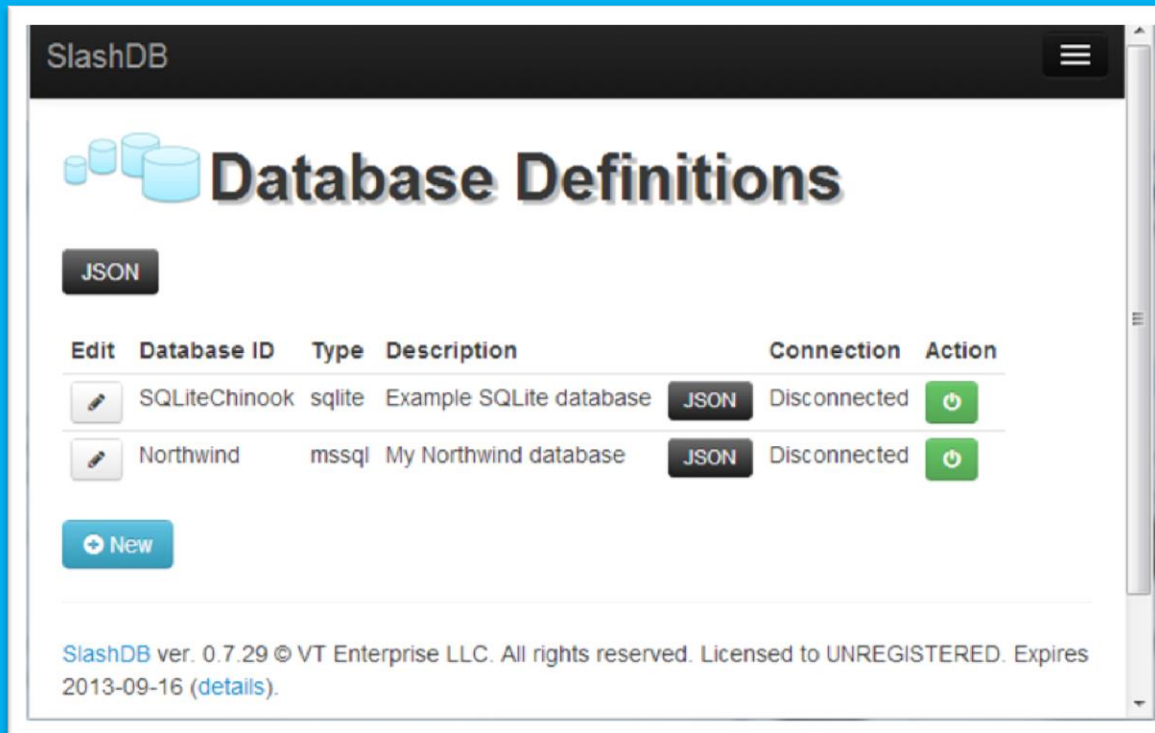
- 6.3 Repeat for all your databases.



# 6. Connect Your Database

7.1 Connect your database to turn on SlashDB web services for that database on **Database Definitions** page .

7.2 Once added, your database will be shown as “Disconnected.” Click the “Power” button under Actions next to your database. The status will change to “Connected”.

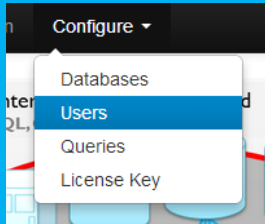


The screenshot shows the SlashDB web interface. At the top, there's a header with the 'SlashDB' logo and a menu icon. Below the header, the main section is titled 'Database Definitions' with a database icon. A 'JSON' button is visible. Below this is a table with columns: Edit, Database ID, Type, Description, Connection, and Action. The table lists two databases: 'SQLiteChinook' (sqlite, Example SQLite database) and 'Northwind' (mssql, My Northwind database). Both are currently 'Disconnected' and have a green power button in the Action column. A 'New' button is at the bottom left. At the bottom, there's a footer with version information: 'SlashDB ver. 0.7.29 © VT Enterprise LLC. All rights reserved. Licensed to UNREGISTERED. Expires 2013-09-16 (details)'.

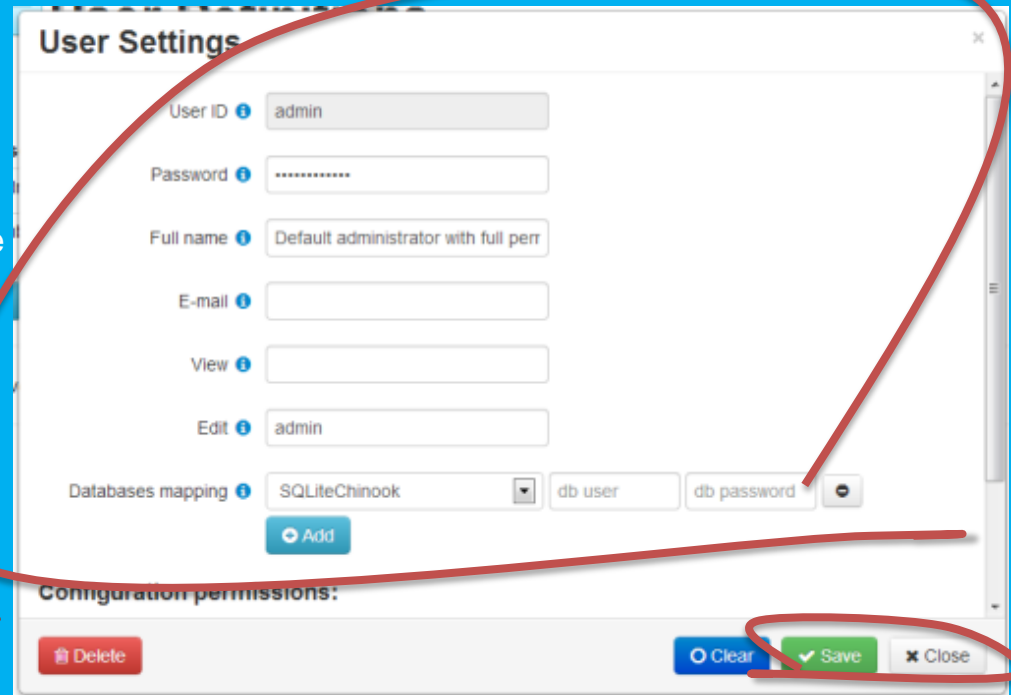
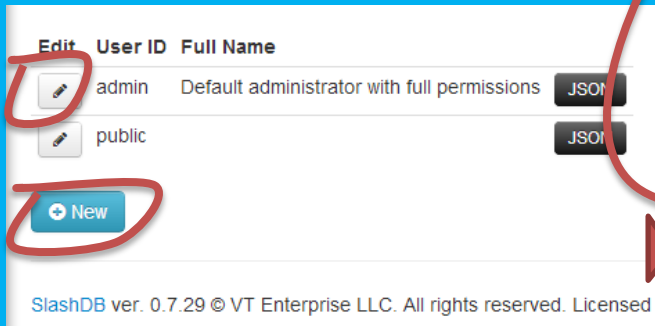
Edit	Database ID	Type	Description	Connection	Action
	SQLiteChinook	sqlite	Example SQLite database	JSON Disconnected	
	Northwind	mssql	My Northwind database	JSON Disconnected	

# 7. Adding Users and User Permissions

- 8.1 Select **Users** from the dropdown menu under **Configure**.



- 8.2 Click the **New** button to add new user or the pencil icon to edit existing user. User Settings will pop up into the screen.



- 8.3 Add database mapping to allow the user to access the database by selecting the appropriate database from the dropdown next to **Databases Mapping**. Then indicate the database login and password this user will be connecting with. Once done, click **Add**. Repeat for all databases this user will be privileged to access.
- 8.4 Click **Save** and then **Close** when done to save all changes.

# Congrats! You're Done :)

Now you can explore SlashDB's Unique and Convenient Services

SlashDB

## Databases

XML XSD JSON CSV

Database Name	Type	Description	Connection	Action
SQLiteChinook	sqlite	Example SQLite database	Disconnected	
Northwind	mssql	My Northwind database	Connected	

HTML XML XSD JSON CSV

## Connection Action

Connected

This XML file does not appear to have the correct XML format and is being displayed as raw text.

```
<SlashDB xmlns:xsi="http://www.w3.org/2001/XMLSchema-instance" xsi:schemaLocation="http://www.slashdb.com/xsd http://www.slashdb.com/xsd/slashdb.xsd">
  <SQLiteChinook href="/db/SQLiteChinook">
    <Album href="/db/SQLiteChinook/Album">
      <Artist href="/db/SQLiteChinook/Artist">
        <Customer href="/db/SQLiteChinook/Customer">
          <Employee href="/db/SQLiteChinook/Employee">
            <Genre href="/db/SQLiteChinook/Genre">
              <Invoice href="/db/SQLiteChinook/Invoice">
                <InvoiceLine href="/db/SQLiteChinook/InvoiceLine">
                  <MediaType href="/db/SQLiteChinook/MediaType">
```

Data Discovery

## Queries

JSON

Run	Query ID	Description	Database	customer-list
	customer-list	Example query with two parameters	SQLiteChinook	<input type="text" value="Germany"/>
				<input type="text" value="Berlin"/>

## Queries

JSON

Run	Query ID
	customers by country city

## customers by country city

SQL Pass-Thru  
Queries

# Thank You for Trying Out SlashDB!



## Questions?

- Call or email your dedicated customer service representative
- Free trial users can send questions to [contact@slashdb.com](mailto:contact@slashdb.com)
- See documentation at <http://www.slashdb.com/documentation/>